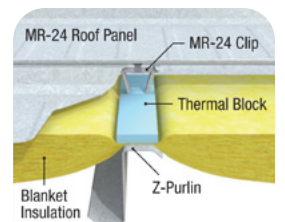
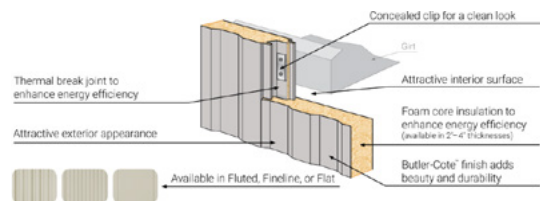


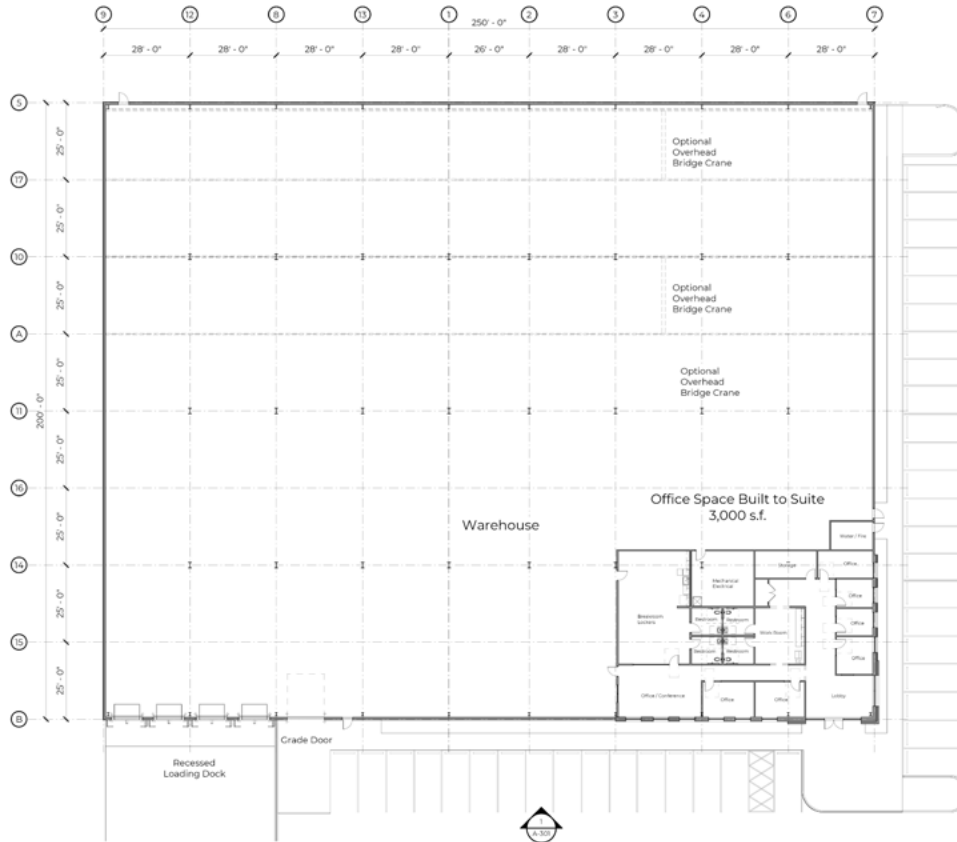


BUILDING FEATURES

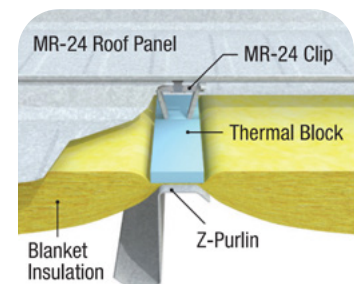
- Building dimensions: 200' x 250' x 28' low eave
- (1) 12' x 14' Overhead grade door
- Butler insulated metal panel (IMP) siding
- Butler MR-24 standing seam roof
- Storefront glazing windows and full glass double storefront doors in office area
- Clearstory storefront windows in warehouse area
- Recessed loading dock with (4) 10' x 10' overhead doors and dock levelers
- (3) Optional overhead bridge cranes
- Build to suit office needs
- (6) Offices & (1) conference room, (4) single occupant restrooms, breakroom with lockers, (1) work room with casework
- 200 Amp, three phase electrical service, LED lighting, exterior illumination
- Utility allowance
- 4" Thick concrete slab figured in office area and 6" in warehouse/shop area
- Office area has 16' masonry wainscot and 8' wainscot with leveling course around rest of the building
- Front entrance has architectural metal siding and a pre-engineered metal canopy
- Architectural enhancements suitable for typical protective covenant requirements
- All architectural and engineering fees and building plan approvals included



FLOOR PLAN



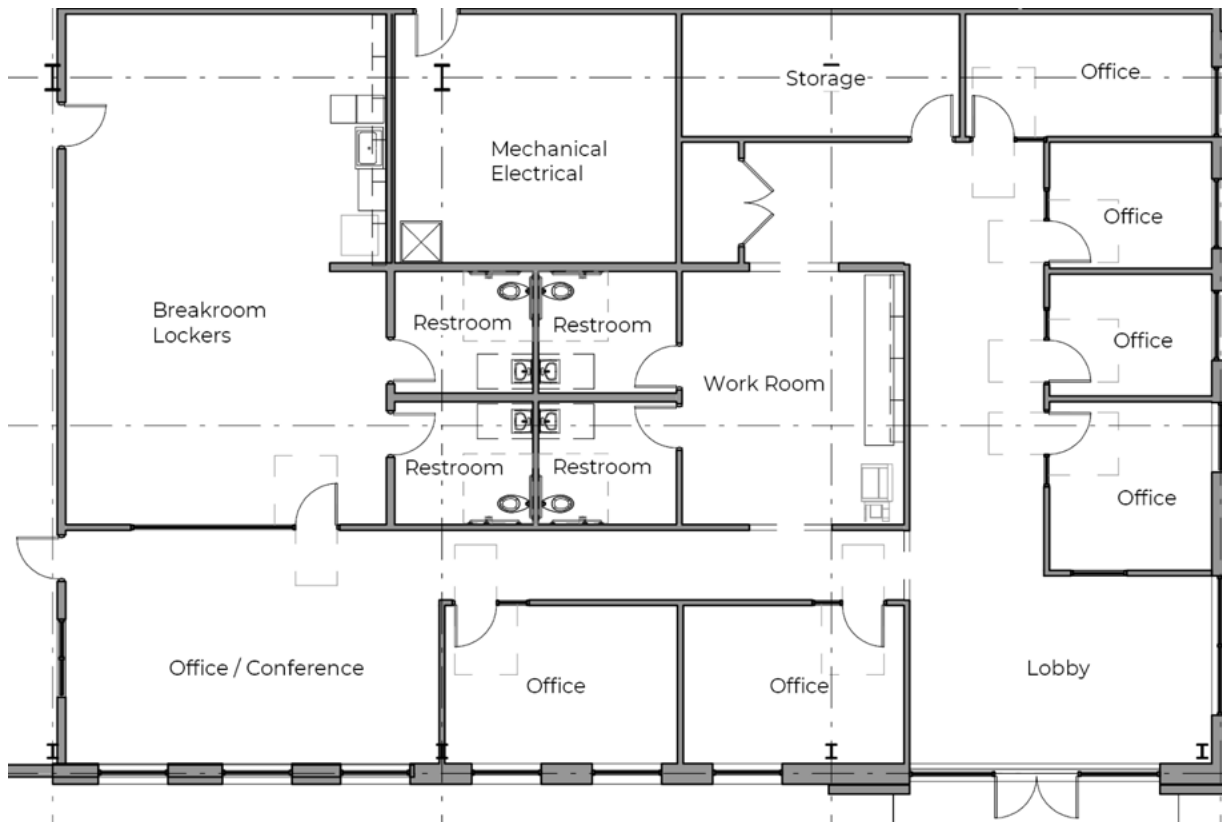
MR-24® ROOF SYSTEM



- 200' x 250' x 28' Low eave and (1) 12' x 14' overhead grade door
- Butler insulated metal panel (IMP) siding and Butler MR-24 standing seam roof
- Recessed loading dock with (4) 10' x 10' overhead doors and dock levelers
- (3) Optional overhead bridge cranes
- Build to suit office needs
- (6) Offices & (1) conference room, (4) single occupant restrooms, breakroom with lockers, (1) work room with casework
- 200 Amp, three phase electrical service, LED lighting, exterior illumination
- Utility allowance
- 4" Thick concrete slab figured in office area and 6" in warehouse/shop area
- Architectural enhancements suitable for typical protective covenant requirements
- All architectural and engineering fees and building plan approvals included

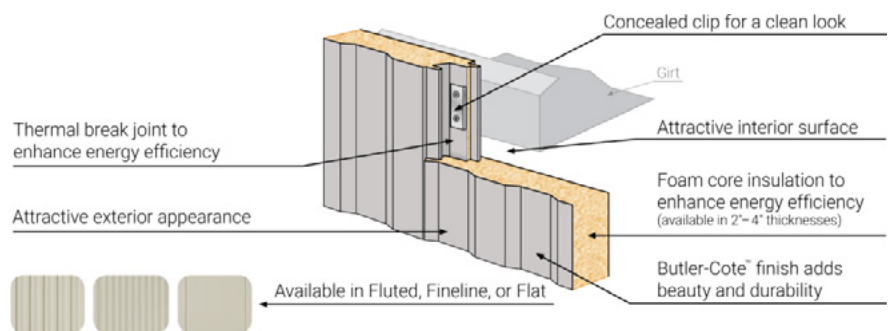


FLOOR PLAN

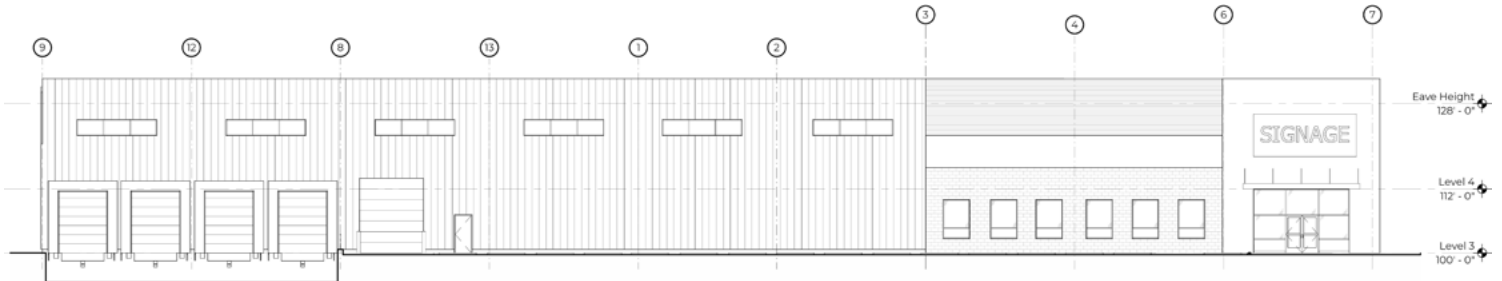


- Build to suit office needs
- (6) Offices & (1) conference room
- (4) Single occupant restrooms
- Breakroom with lockers
- (1) Work room with casework
- Butler insulated metal panel (IMP) siding
- Butler MR-24 standing seam roof
- 200 Amp
- Three phase electrical service
- LED lighting
- Exterior illumination

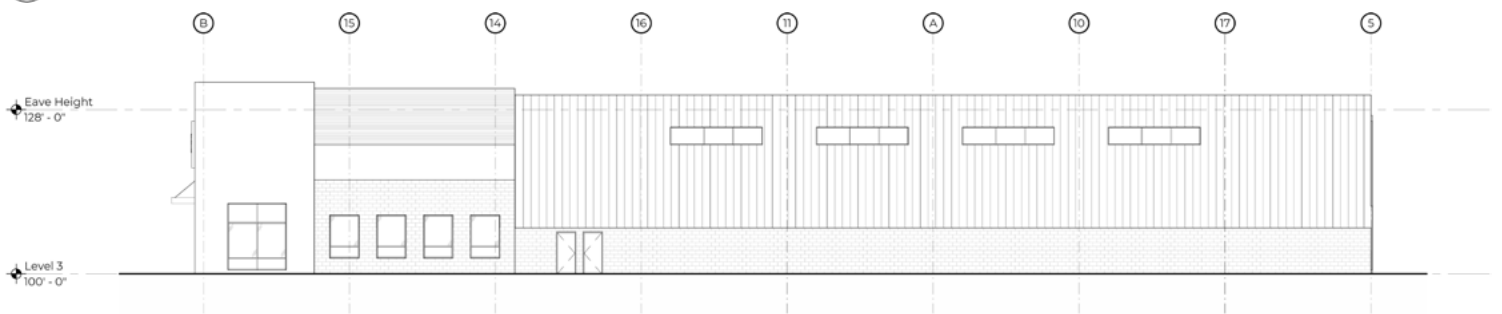
INSULATED METAL WALL PANEL



ELEVATION DRAWINGS



1 Elevation 1 - a
A-301 3/32" = 1'-0"



2 Elevation 1 - b
A-301 3/32" = 1'-0"

- 200' x 250' x 28' Low eave and (1) 12' x 14' overhead grade door
- Butler insulated metal panel (IMP) siding
- Butler MR-24 standing seam roof
- Build to suit office needs
- Storefront glazing windows and full glass double storefront entrance doors in office area
- Clearstory storefront windows in warehouse area
- Recessed loading dock with (4) 10' x 10' overhead doors and dock levelers
- 200 Amp, three phase electrical service, LED lighting, exterior illumination
- Utility allowance
- Office area has 16' masonry wainscot and 8' wainscot with leveling course around rest of the building
- Front entrance has architectural metal siding and a pre-engineered metal canopy
- Architectural enhancements suitable for typical protective covenant requirements
- All architectural and engineering fees and building plan approvals included

