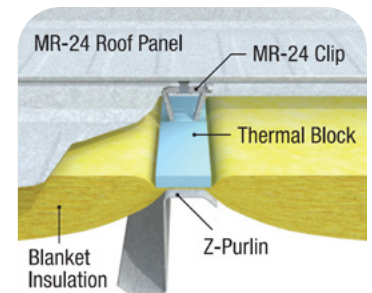




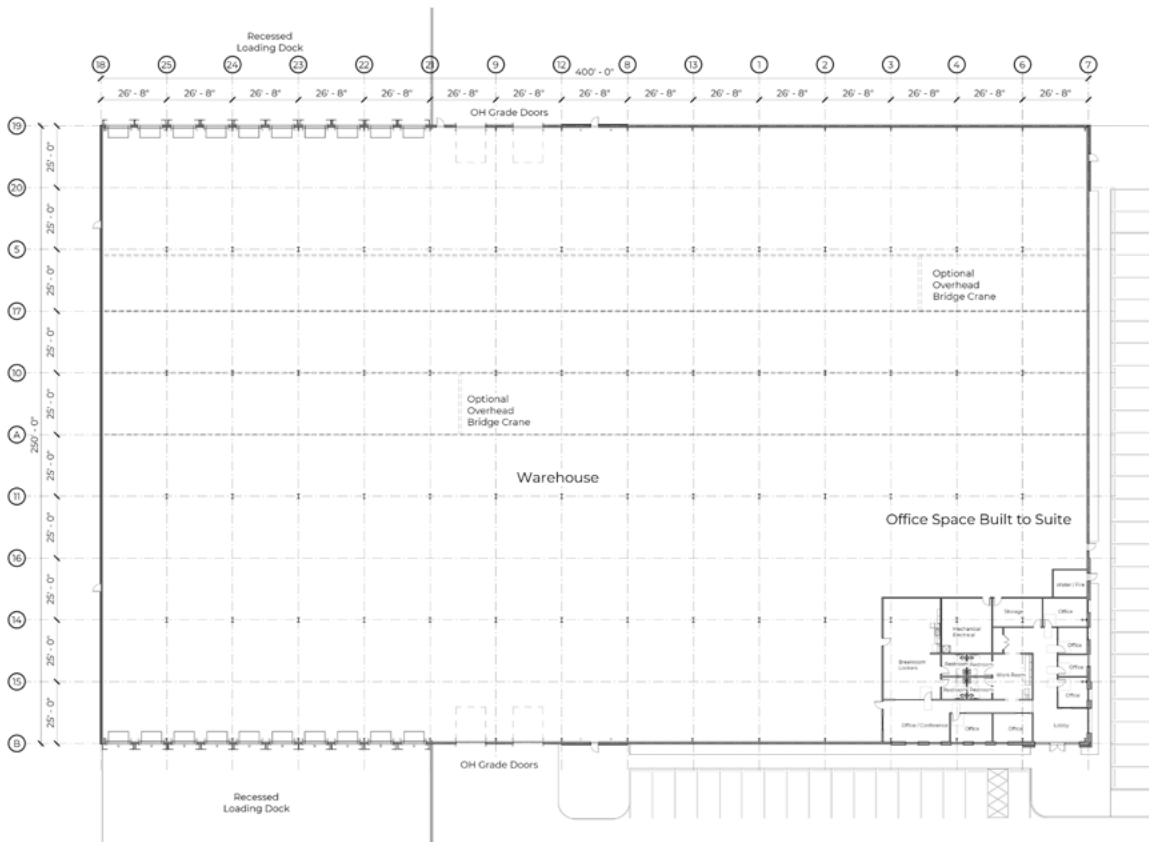
BUILDING FEATURES

- Building dimensions: 250' x 400' x 30' low eave
- (4) 12' x 14' Overhead grade doors
- Butler LogistX™ building system and Butler MR-24 standing seam roof
- Butler pre-cast concrete wall panels
- Storefront glazing windows and full glass double storefront doors in office area
- Clearstory storefront windows in warehouse area
- Recessed loading dock with (20) 10' x 10' overhead doors and dock levelers
- (2) Optional overhead bridge cranes
- Build to suit office needs
- (6) Offices & (1) conference room
- (4) Single occupant restrooms
- Breakroom with lockers
- (1) Work room with casework
- 200 Amp, three-phase electrical service, LED lighting, exterior illumination
- Utility allowance
- 4" Thick concrete slab figured in office area and 6" in warehouse/shop area
- Office area has 16' masonry wainscot and 8' wainscot with leveling course around rest of the building
- Front entrance has architectural metal siding and a pre-engineered metal canopy
- Architectural enhancements suitable for typical protective covenant requirements
- All architectural and engineering fees and building plan approvals included

MR-24® ROOF SYSTEM



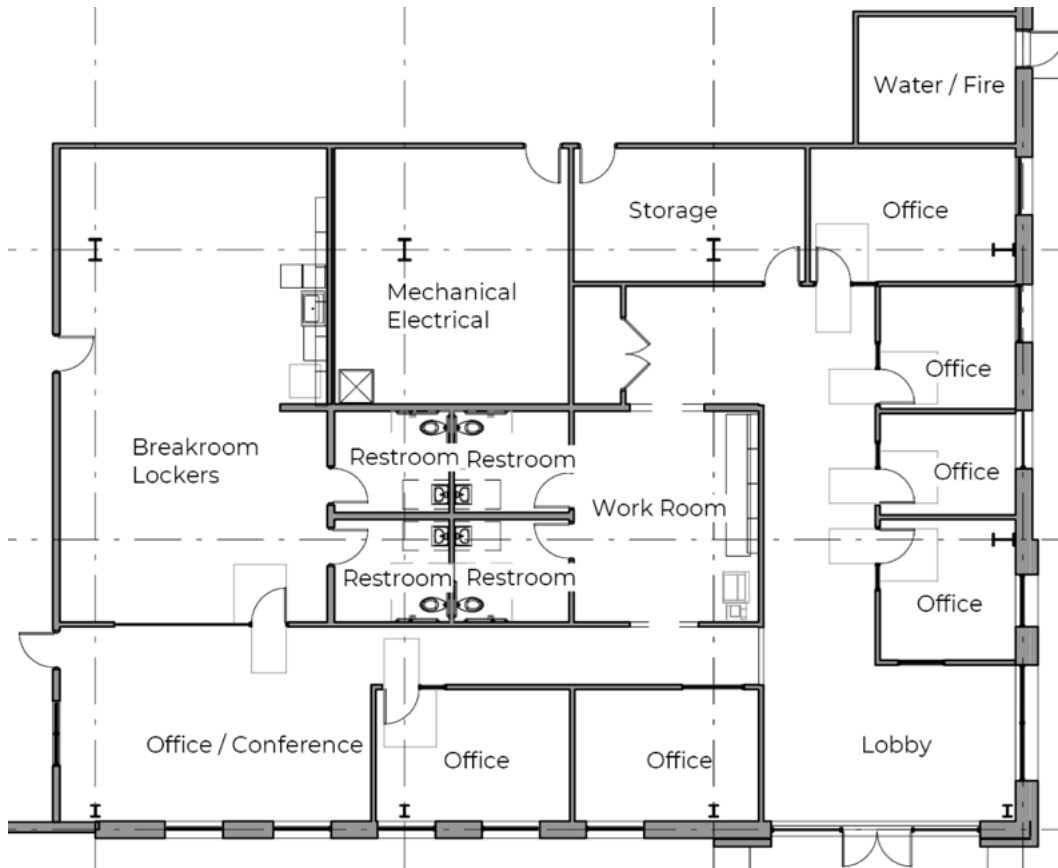
PRECAST /
TILT WALL



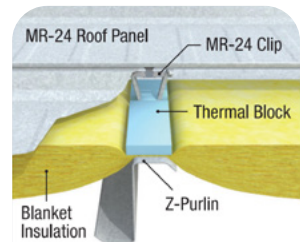
- 250' x 400' x 30' low eave and (4) 12' x 14' overhead grade doors
- Butler LogistX™ building system, Butler MR-24 standing seam roof, and Butler pre-cast concrete wall panels
- Recessed loading dock with (20) 10' x 10' overhead doors and dock levels
- (2) Optional overhead bridge cranes
- Build to suit office needs
- (6) Offices & (1) conference room, (4) single occupant restrooms, breakroom with lockers, (1) work room with casework
- 200 Amp, three-phase electrical service, LED lighting, exterior illumination
- Utility allowance
- 4" Thick concrete slab figured in office area and 6" in warehouse/shop area
- Architectural enhancements suitable for typical protective covenant requirements
- All architectural and engineering fees and building plan approvals included



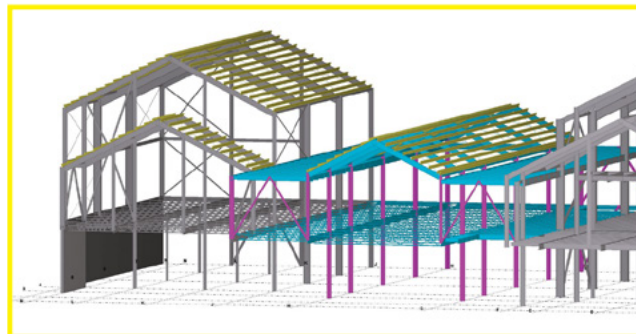
PRECAST / TILT WALL



MR-24® ROOF SYSTEM

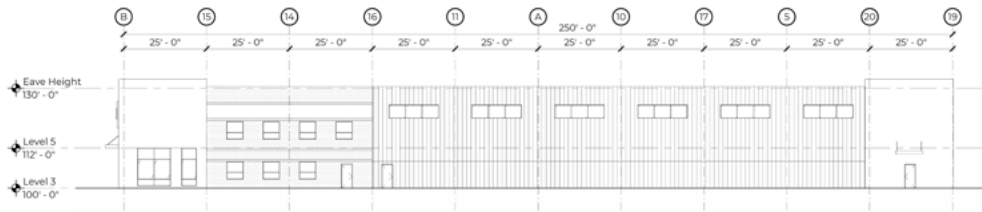


- Build to suit office needs
- (6) Offices & (1) conference room
- (4) Single occupant restrooms
- Breakroom with lockers
- (1) Work room with casework
- Butler LogistX™ building system
- Butler MR-24 standing seam roof
- Butler pre-cast concrete wall panels
- 200 Amp, three-phase electrical service, LED lighting, exterior illumination
- 4" Thick concrete slab figured in office area and 6" in warehouse/shop area

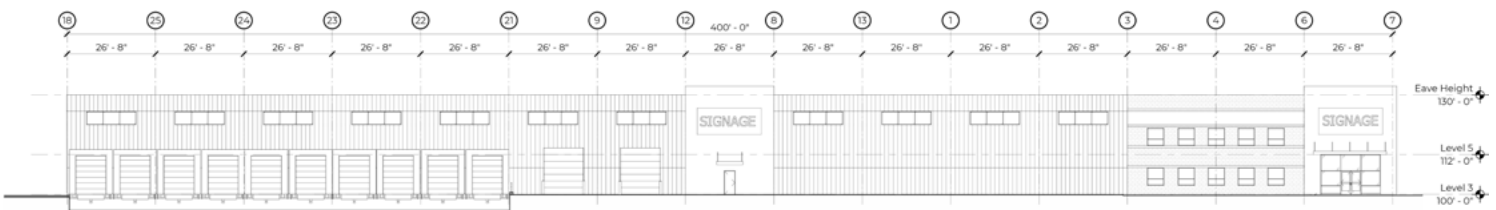


Utilizing Tekla software, we efficiently detail complex structural designs and provide Building Information Modeling (BIM) interface when required.



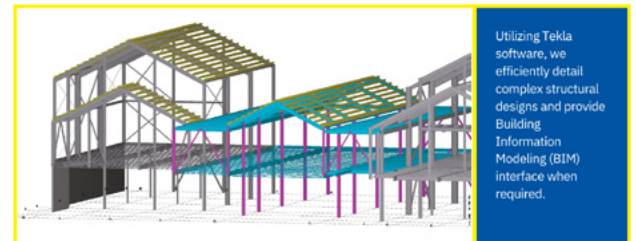


2 East Elevation
A-301 1/16" = 1'-0"



1 South Elevation
A-301 1/16" = 1'-0"

- Building dimensions: 250' x 400' x 30' low eave
- (4) 12' x 14' Overhead grade doors
- Butler LogistX™ building system
- Butler MR-24 standing seam roof
- Butler pre-cast concrete wall panels
- Storefront glazing windows and full glass double storefront entrance doors in office area
- Clearstory storefront windows in warehouse area
- Recessed loading dock with (20) 10' x 10' overhead doors and dock levelers
- (2) Optional overhead bridge cranes
- Build to suit office needs
- 200 Amp, three-phase electrical service, LED lighting, exterior illumination
- Utility allowance
- 4" Thick concrete slab figured in office area and 6" in warehouse/shop area
- Office area has 16' masonry wainscot and 8' wainscot with leveling course around rest of the building
- Front entrance has architectural metal siding and a pre-engineered metal canopy
- Architectural enhancements suitable for typical protective covenant requirements
- All architectural and engineering fees and building plan approvals included



MR-24® ROOF SYSTEM

